



Model: RE1500

AX1500

Mesh Wi-Fi 6 Range Extender

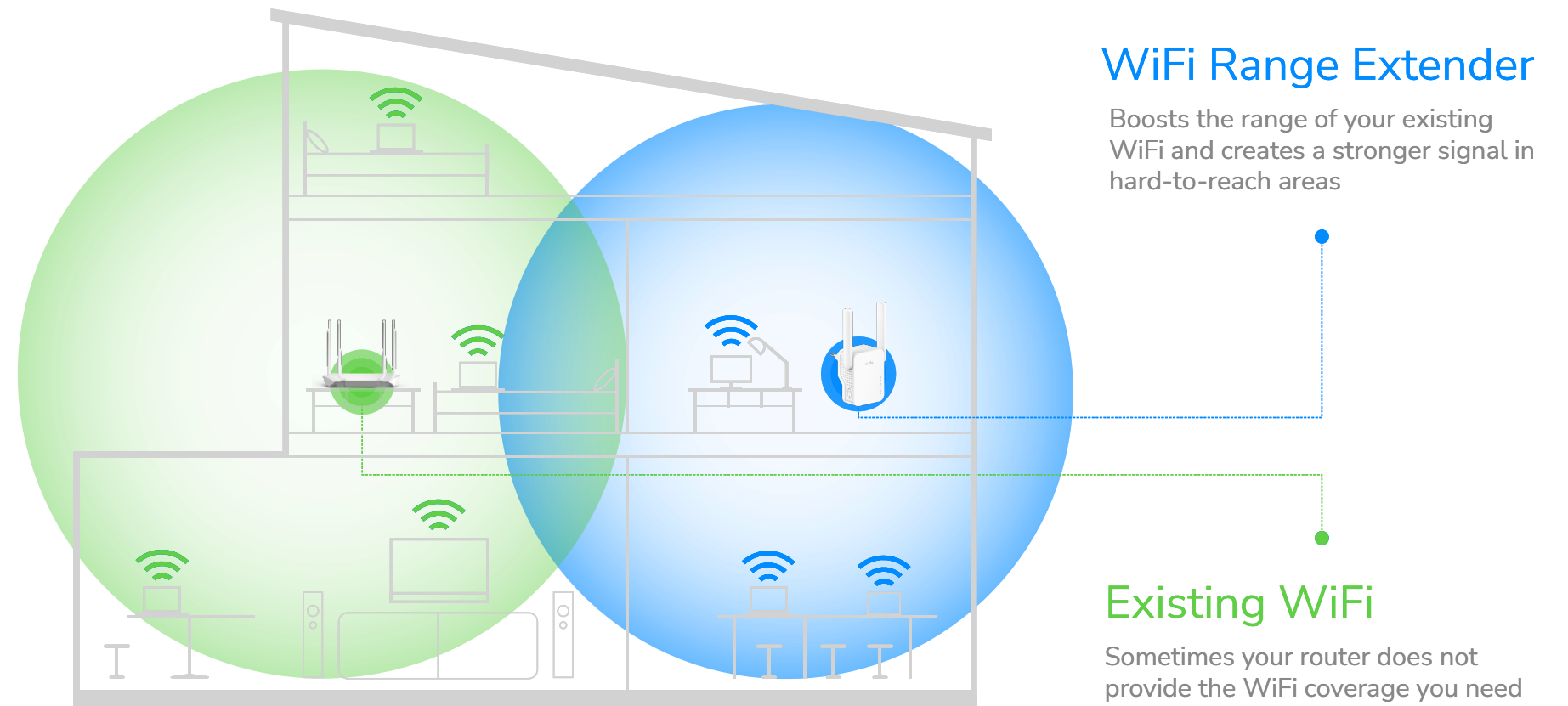




Features

A range extender featuring AX1500 WiFi 6 and a 10/100 Mbps RJ45 port. Press WPS buttons to expand existing Wi-Fi instantly.

- Works with Any Wi-Fi Router
- Dual-Band Wi-Fi 6
- 30 Connected Devices
- 10/100 Mbps Ethernet Port
- Cudy Mesh Satellite
- Multi-Band Simultaneous Backhaul
- Ethernet Backhaul



Wi-Fi Extender Mode



Access Point Mode

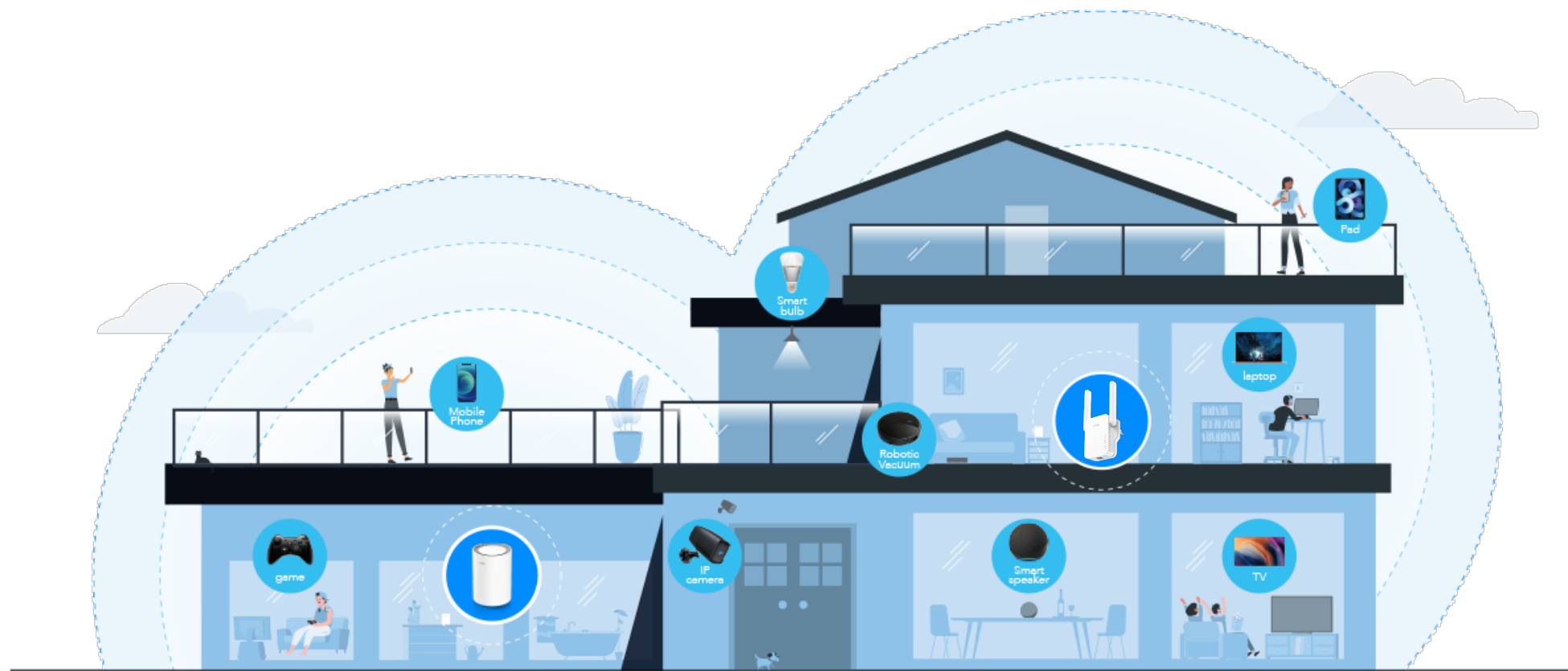
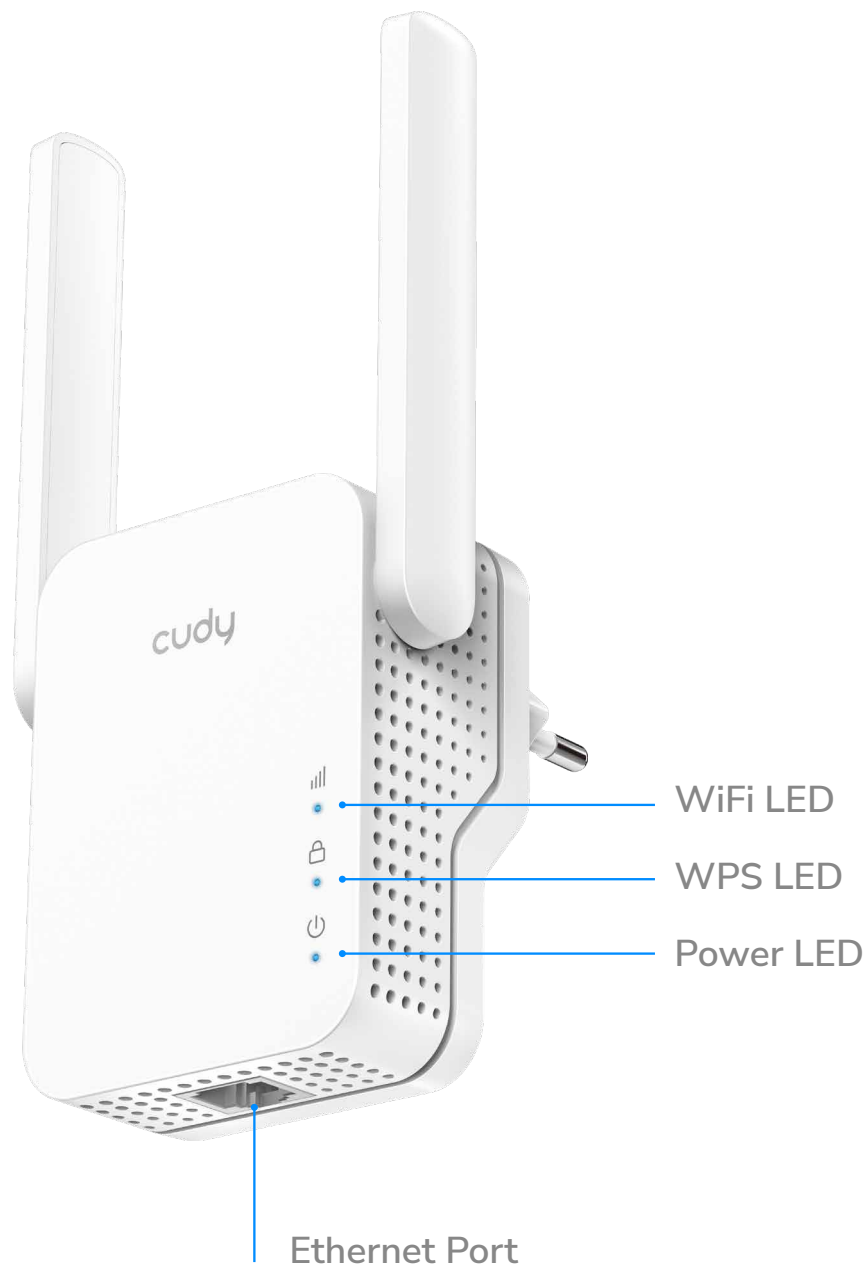


Client Mode



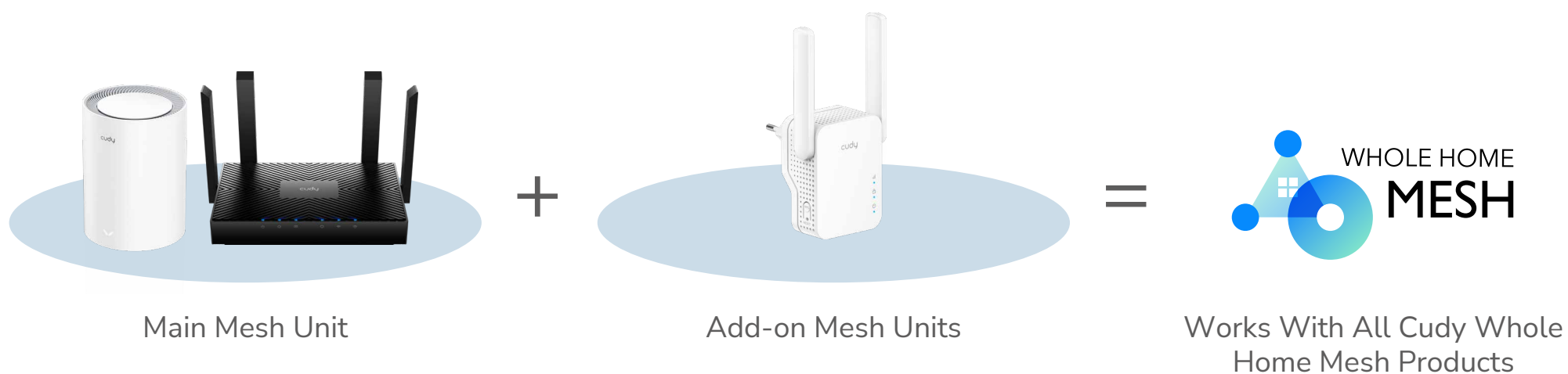


Say Goodbye to Dead Spots and Buffering



Enjoy Cudy Whole Home Mesh Wi-Fi System

4K 5GHz 1201Mbps
2.4GHz 300Mbps





Hardware Specs

Memory/Storage	Flash/ROM	16 MB (128 Mbit) NOR
	DDR/RAM	128 MB (1 Gbit) DDR3
Wireless	5 GHz Wi-Fi Speed	1201 Mbps
	2.4 GHz Wi-Fi Speed	300 Mbps
	5 GHz Wi-Fi Streams	2T2R (2×2 MIMO)
	2.4 GHz Wi-Fi Streams	2T2R (2×2 MIMO)
	Wi-Fi Antennas	2× Fixed
	FEM or PA/LNA	5 GHz: 2× Internal 2.4 GHz: 2× Internal
	Range Performance	Max: 150 m (492 ft) Tested in open-space environments with minimal interference. Actual WiFi range may vary depending on layout and wall materials. Refer to the Wall Performance specifications for placement suggestions.
Wall Performance	Two wooden walls with thickness < 10 cm (4") One concrete wall with thickness < 20 cm (7")	
Interfaces	10/100 Mbps RJ45 Ports	1
	LED	Signal Strength
		WPS
		Power

Hardware Specs

Interfaces	Physical Buttons	WPS Button Reset Button
	Power Input	AC Plug
	Power Input Note	EU, US, UK Plug are Available
Power	Power Methods	AC
	AC	100V ~ 240V
	Max Power Consumption (W)	10W
Reliability	Environment	Operating Temperature: 0 °C ~ 40 °C (32 °F ~104 °F)
		Storage Temperature: -40 °C ~ 70 °C (-40 °F ~ 158 °F)
		Humidity: 10% ~ 90% non-condensing
		Storage Humidity: 5% ~ 95% non-condensing
Certifications	FCC, CE	
Mechanical	Install in a Daisy Chain	Recommend to install less than 3 repeaters in a wireless chain.
	Installation	Plug-In-Socket
	Dimension	80×60×38 mm
		3.15×2.36×1.5 inches
Package Content	RE1500 Installation Guide	

Hardware Specs

Ordering Information	Retail Package Dimension	74×84×107 mm
		2.91×3.31×4.21 inches
	Units per Carton	60
	Carton Dimension	40.1×36×34.6 cm
		15.79×14.17×13.62 inches

Software Specs

Wireless	Wi-Fi Standards	Wi-Fi 6
	Max Wi-Fi Modulation	1024-QAM
	Wi-Fi Efficiency	Beamforming
	Max Capacity	128
	Recommended Client Upper Limit	30
	Max Wi-Fi Channel Width	80 MHz
	Wi-Fi Security	WPA/WPA2/WPA3
	WPS	True
General	Operation Modes	Access Point
		Range Extender
		Client
	Mesh	Cudy Mesh Satellite

Software Specs

General	Mesh Backhaul	Wireless Backhaul
		Wired Backhaul
	Multi-Band Backhaul	True
System	LED Control	True
	Local Control Method	Config Web Page
		App Control
		Remote Control Method
	Firmware Upgrade	Local Update
		App (Over the Air)
		Online Update
	Reliability	Timed Reboot
		Backup and Restore
Dashboard	Panel	Connected Devices
		Host Network Status
		Wi-Fi Status
		LAN Status
		System Version
System	Diagnostic Tools	Ping
		Traceroute
		NSLookup
		System Log



Software Specs

System	Languages	<ul style="list-style-type: none">• English• Bengali• Catalan• Czech• German• Greek• Spanish• French• Hebrew• Italian• Croatian• Hungarian• Khmer• Korean• Dutch• Japanese• Russian• Slovak• Swedish• Romanian• Turkish• Vietnamese• Thai• Ukrainian• Polish• Norwegian• Portuguese• Simplified Chinese• Traditional Chinese
Dashboard	Charts	Mesh Topology