

RG-EG406XS-P

5-Port (4 PoE/PoE+) 2.5G Cloud Managed Router, 1 x 10G Port



Highlights

- Supporting up to 400 concurrent clients, with 4 PoE Out ports.
- High-performance router with 2.5 Gbps throughput for diverse network scenarios.
- Efficient bandwidth management based on applications and users.
- Multi-WAN, smart load balancing.
- Lifetime* free management on Ruijie Cloud anytime, anywhere.

* Lifetime means the lifespan of the product, subject to EOL policies.

Highlight Features

RG-EG406XS

Unleashing Multi-Gig, Elevating Performance



5 x 10/100/1000/2500BASE-T Ports

1 x 10GE SFP+ Port

LAN0 LAN1/WAN3 LAN2/WAN2 LAN3/WAN1 WAN0 LAN4/WAN4

RG-EG406XS

SYS RESET DC 12V 2.5G 10G SFP+ Scan to Add

400 Concurrent Clients

100 VPN Tunnels

2.5 Gbps Throughput

Multi-WAN Load Balancing

RG-EG406XS-P

Unleashing Multi-Gig, Elevating Performance



4 x PoE Out Ports

5 x 10/100/1000/2500BASE-T Ports

1 x 10GE SFP+ Port

PoE LAN0 LAN1/WAN3 LAN2/WAN2 LAN3/WAN1 WAN0 LAN4/WAN4

RG-EG406XS-P

SYS RESET DC 54V 2.5G 10G SFP+ Scan to Add

400 Concurrent Clients

100 VPN Tunnels

2.5 Gbps Throughput

Multi-WAN Load Balancing

Whole-Home 2.5G, Designed for Your Ideal Living

Empower every corner with ultra-fast, intelligent connectivity



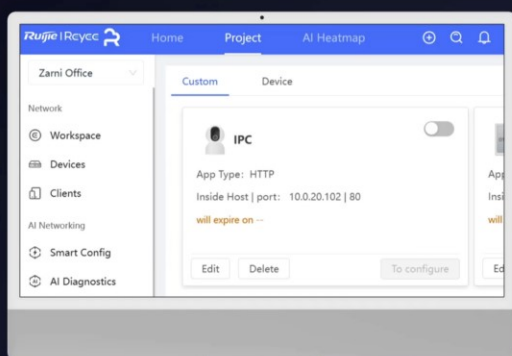
The illustration shows a modern house at night with large glass windows. Three circular callouts highlight different areas: a living room with a white ceiling light, a bedroom with a white ceiling light, and a kitchen with a white ceiling light. A small inset image shows the Ruijie RG-EG406XS network switch.

* Product images are computer-generated for illustration purposes only. Actual products may vary in details, features, or appearance.

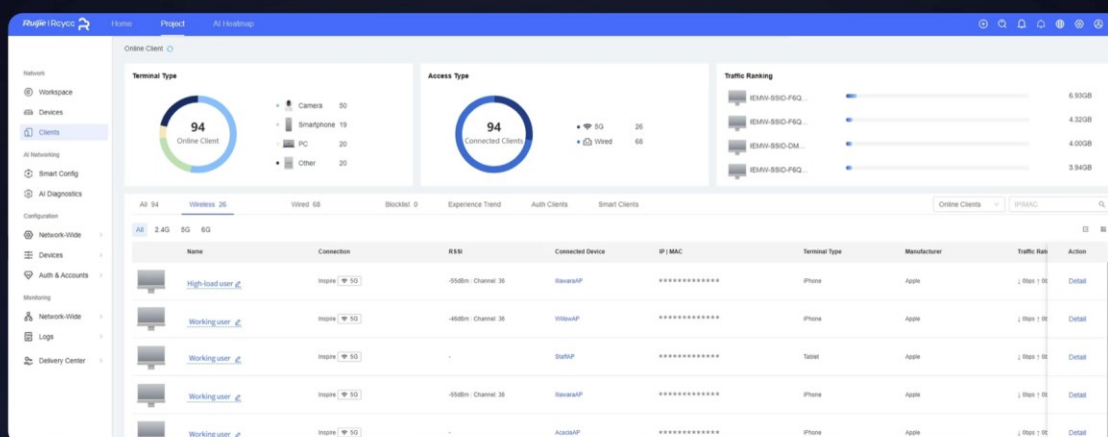
Highlight Features

Easy NAT Traversal

The management console uniformly displays all third-party devices, enabling easy intranet access and one-click links to their web interfaces.



Client Recognition & Flow Control



Cloud, Make Your Business Easy

- Self-organizing network
- Quickly advanced service setup by app
- Scenario-based configuration guide
- Marketing portal authentication



* Product images are computer-generated for illustration purposes only. Actual products may vary in details, features, or appearance.

/ Hardware Specifications

Model	RG-EG406XS-P
Port Specifications	
Total number of optical ports	1
Total number of RJ45 ports	5
Number of 10/100/1000/2500BASE-T ports	5
Number of 10GE SFP+ ports	1
Maximum number of LAN ports	5
Maximum number of WAN ports	5
Number of fixed LAN ports	1
Number of fixed WAN ports	1
Number of LAN/WAN ports	4
LEDs	1 x system status LED 6 x Ethernet port LEDs
Reset button	1
System Specifications	
CPU	Quad-core processor, 2.0 GHz clock frequency per core
Flash memory	256 MB
RAM	1 GB
Power Supply and Consumption	
Power supply	DC power adapter
Dimensions of the DC connector	Outer diameter: 5.5 mm (0.22 in.) Inner diameter: 2.1 mm (0.08 in.) Depth: 10.0 mm (0.39 in.)
Maximum power consumption	9.2 W (with no PoE load) 129 W (with full PoE load)
PoE budget	110 W
Number of PoE Out ports	4
PoE budget per port	30 W

/ Hardware Specifications

Model	RG-EG406XS-P
PoE power pins	1-2 (+), 3-6 (-)
PoE Out standard	IEEE 802.3af/at (PoE/PoE+)
Dimensions and Weight	
Package dimensions (W x D x H)	278 mm x 229 mm x 77 mm (10.94 in. x 9.02 in. x 3.03 in.)
Product dimensions (W x D x H)	202 mm x 108 mm x 28 mm (7.95 in. x 4.25 in. x 1.1 in.)
Shipping weight	1.56 kg (3.44 lbs)
Weight	0.62 kg (1.37 lbs)
Environment and Reliability	
Cooling	Natural cooling
Fan	Fanless design
Mounting options	Desk
Operating humidity	10% RH to 90% RH (non-condensing)
Operating temperature	0°C to 40°C (32°F to 104°F)
Storage humidity	5% RH to 95% RH (non-condensing)
Storage temperature	-40°C to +70°C (-40°F to +158°F)
Surge protection	Service port: ±4 kV for common mode Power connector: ±4 kV for common mode and ±4 kV for differential mode

Software Specifications

Model	RG-EG406XS-P
System Performance Capacity	
Maximum number of concurrent sessions	120000
Recommended number of concurrent clients	400
Throughput	2500 Mbps
Basic Configurations	
AC mode	Yes
Automatically identifying the Internet access mode and obtaining IP addresses	Yes
Automatically learning the PPPoE username and password of other routers	Yes
Configuration backup	Yes
Internet access mode	Static IP address Static IPv6 address Dynamic IP address Dynamic IPv6 address PPPoE
Local upgrade	Yes
Log upload	Yes
Online upgrade	Yes
Restoring factory defaults	Yes
System language	English, Chinese, Turkish, Arabic, Vietnamese, Thai, Indonesian, Latin American Spanish, Brazilian Portuguese, Russian, French, German, European Spanish, Italian, and Polish
Authentication	
Portal authentication	Yes
One-click authentication	Yes
Password authentication	Yes

Software Specifications

Model	RG-EG406XS-P
SMS-based authentication	Yes
Voucher authentication supported by Ruijie Cloud portal page	Yes
Cloud portal authentication	Yes
Local portal authentication	Yes
QR code authentication	Yes
Custom portal page	Yes
Account-based authentication supported by Ruijie Cloud portal page	Yes
CHAP, MS-CHAPv1, MS-CHAPv2	Yes
Delivery through Ruijie Cloud portal page	Yes
802.1X authentication	Yes
MAC address-based authentication	Yes
PPPoE server	Yes
Number of accounts supported by the PPPoE server	400
Number of concurrent clients supported by the PPPoE server	200
PAP	Yes
RADIUS authentication	Yes
RADIUS client	Yes
RADIUS accounting based on time or traffic	Yes
RADIUS flow control authorization	Yes
RADIUS proxy server	Yes
RADIUS traffic quota authorization	Yes

Software Specifications

Model	RG-EG406XS-P
RADIUS user group authorization	Yes
Third-party authentication	Yes
Ethernet Interface	
Avoiding IP address conflicts on WAN interfaces	Yes
Load balancing	Yes
MAC address cloning	Yes
Multiple WAN interfaces on the same network segment	Yes
PPPoE clients	Yes
Scheduled PPPoE reconnection	No
Ethernet Switching	
Configuring multiple VLANs upon configuration delivery	No
Link aggregation	No
LLDP	No
VLAN	Yes
Maximum number of VLANs	128
VLAN configuration supported on LAN ports	Yes
Super-VLAN	No
Configuring the same VLAN tag for multiple WAN ports	No
VLAN priority	Yes
Number of MAC address entries to be filtered	512
Gateway Features	
WAN failover	Yes

Software Specifications

Model	RG-EG406XS-P
Application priority	Yes
Application recognition	Yes
Behavior management	Yes
Flow control	Yes
Time-based blocking policy	Yes
IP address-based blocking policy	
Website filtering: custom URL	Yes
Traffic audit	Yes
URL audit log	Yes
Audit log server	Yes
Audit log storage	No
Uploading audit logs to a server	Yes
IP Routing	
Application-based routing	No
Bandwidth aggregation	Yes
BGP	Yes
BGP4	Yes
BGP4+	Yes
ECMP	No
IPv4 static route	Yes
IPv6 PBR	Yes
IPv6 static route	Yes
IS-ISv4	No
IS-ISv6	No

Software Specifications

Model	RG-EG406XS-P
Load balancing based on flows	Yes
Load balancing based on source IP addresses	Yes
Load balancing based on the interface weight	Yes
OSPFv2	Yes
OSPFv3	Yes
RIP	Yes
RIPng	Yes
IP Service	
3322.org	Yes
ALG	Yes
ARP binding	Yes
Maximum number of ARP entries	1024
Proxy ARP	No
Cloudflare	Yes
DHCP client	Yes
DHCP server	Yes
DHCP relay	No
Option 43	Yes
Option 138	Yes
Static/Dynamic NAT	Yes
NAT-PT	No
NAT loopback	Yes
DNS client	Yes

Software Specifications

Model	RG-EG406XS-P
DNS proxy	Yes
DNS server	Yes
No-IP DNS	Yes
GRE tunnel	No
IPTV	Yes
IPv4 ping	Yes
IPv6	Yes
IPv6 ping	Yes
Number of port mapping entries	512
Port mapping	Yes
DDNS	Yes
Ruijie DDNS	Yes
Alibaba Cloud DDNS	Yes
UPnP	Yes
MPLS	
MPLS L2VPN	No
Network Management and Monitoring	
Web management	Yes
Ruijie Cloud management	Yes
Management on Ruijie Reyee App	Yes
Remotely monitoring devices through Ruijie Reyee App	Yes
Restarting devices through Ruijie Reyee App	Yes
Upgrading device software version through Ruijie Reyee App	Yes

Software Specifications

Model	RG-EG406XS-P
Fault diagnosis	Yes
FTP client (IPv4 address)	No
FTP server (IPv4 address)	No
TFTP client (IPv4 address)	Yes
TFTP server (IPv4 address)	No
HTTPS login	Yes
NTP client	Yes
NTP server	No
Scheduled device restart	Yes
SNMPv1, v2c, and v3	Yes
SON	Yes
SSH	No
Telnet	No
Web login information	Default IP Address: 192.168.110.1 Default Password: admin
Maximum number of managed devices (router mode)	AP and NBS series: 200 ES series: 128 Note: The maximum number of managed devices varies with each device series.
Maximum number of managed devices (AC mode)	AP and NBS series: 750 ES series: 128 Note: The maximum number of managed devices varies with each device series.
Reliability	
Stacking	No
VRRP	No
SD-WAN	
SD-WAN	Yes

Software Specifications

Model	RG-EG406XS-P
SD-WAN performance	750 Mbps
Number of tunnels supported by SD-WAN	300
Maximum number of SD-WAN branches	100
Active/Standby mode (automatically switching to the standby interface when the active interface fails)	Yes
Security	
ACL	Yes
IPv6 ACL	Yes
DHCP snooping	No
Malformed packet attack defense	Yes
Fragmentation attack defense	Yes
Teardrop attack defense	Yes
LAND attack defense	Yes
SYN flood attack defense	Yes
Smurf attack defense	Yes
IP attack defense	Yes
Disabling ping	Yes
Stateful firewall	Yes
IP-MAC binding	Yes
Network sharing prevention	Yes
Security log	Yes
Security zone	Yes
User group-based connection limiting	Yes

Software Specifications

Model	RG-EG406XS-P
VPN	
IPsec VPN	Yes
IPsec VPN bandwidth	700 Mbps
Maximum number of branches in IPsec VPN networking	100
L2TP VPN	Yes
L2TP VPN bandwidth	850 Mbps
Maximum number of branches in L2TP VPN networking	100
OpenVPN	Yes
OpenVPN bandwidth	200 Mbps
Maximum number of branches in OpenVPN networking	100
PPTP VPN	Yes
PPTP VPN bandwidth	850 Mbps
Maximum number of branches in PPTP VPN networking	100
SSL VPN	No
Easy VPN 1.0	No
Number of VPN accounts for L2TP, PPTP, and OpenVPN	400
WireGuard server	Yes
WireGuard client	Yes
WireGuard performance	750 Mbps
Number of concurrent tunnels supported by the WireGuard server	100
WLAN	
Maximum number of APs (AC mode)	750

Software Specifications

Model	RG-EG406XS-P
Maximum number of devices that can be managed	128
Wireless Intelligent Optimization (WIO)	Yes

/ Package Contents

Model	RG-EG406XS-P
Accessories	
Power adapter	1
Power cord	31.49 in. x 1 pieces
Rubber pad	4
Manual	
User Manual	1
Warranty Card	1

Ruijie | ReYee

 **R**edefine **y**our **e**asy network



Ruijie Networks Co., Ltd.

Official Website: <https://Reyee.Ruijie.com>